

THE PENINSULA

B E I J I N G



MEETINGS AND EVENTS

The Peninsula Beijing



Exterior of The Peninsula Beijing

THE HOTEL

Opened in 1989, The Peninsula Beijing has a proud heritage as the first luxury hotel in the Chinese capital. Following a complete renewal inspired by China's imperial architecture, exquisite art and cultural traditions, The Peninsula Beijing sets spectacular new standards as the premier all-suite hotel in Beijing. Guests staying for business or leisure enjoy luxurious suite accommodations, award-winning cuisines at three destination restaurants and rejuvenating spa journeys enhanced

by unparalleled personal service and cutting-edge technology.

The Peninsula Beijing is recognised as the premier address in the capital for business and leisure travellers. Perfectly located in the centre of the city's Wangfujing shopping district and within walking distance to the Forbidden City and Tiananmen Square, the hotel is also easily connected to the Second Ring Road, offering unrivalled proximity to the main commercial, tourist and diplomatic areas.

ACCOMMODATION

The Peninsula Beijing's 230 lavishly appointed guest suites are the largest in Beijing and among the most spacious in China, include 17 165-square-metre (1,776-square-foot) Beijing Suites, each of which has a private mini cinema featuring a 80-inch screen and surround sound audio.

VENUES THAT IMPRESS AND INSPIRE

At The Peninsula Beijing, special events become extraordinary and unforgettable occasions. With a collection of opulent and distinctive function spaces, impeccable attention to detail from a dedicated team of event planners, and an array of bespoke services, including luxury transport, award-winning culinary menus, The Peninsula Beijing ensures that gatherings both grand and intimate make a singular impression.

CLASSIC SOPHISTICATION, STATE-OF-THE-ART TECHNOLOGY

The Peninsula Beijing offers a variety of sophisticated meeting spaces to accommodate business gatherings, each with its own distinct character and functionality. Enhancements including IT support, special seating

configurations, and personalised coffee and meal services enable meetings to proceed seamlessly.

MOMENTOUS MEETINGS

The Peninsula Beijing is a leader in bespoke catering. The hotel's skilled chefs craft inventive menus to delight guests at business functions and incentives events hosted at iconic locations, including the Great Wall, Forbidden City and the Summer Palace.



Event at The Great Wall



Wang Fu Ballroom

VENUES

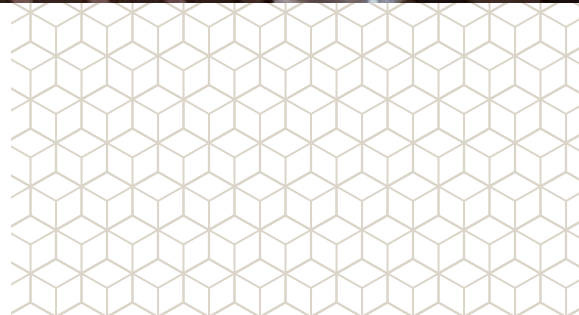
Wang Fu Ballroom *Glamorous • Expansive*

Sophisticated and spacious, with dramatic recessed ceilings and state-of-the-art audiovisual technology, the Wang Fu Ballroom provides an exceptional venue for large banquets and business conferences.

Tang Shi, Song Ci, and Qing Shu Rooms *Sophisticated • Adaptable*

The three function rooms, named after important figures

in Chinese history, are ideal for smaller conferences and business gatherings. Each room features plentiful natural daylight, and allows for high-speed streaming while featuring high-definition projection screens, and built-in high-performance audio. An array of seating configurations and catering services can be arranged for maximum comfort.



Meeting Set-up



The Peninsula Yun

STUNNING VISTAS, SUPERLATIVE SERVICE

Special event venues at The Peninsula Beijing include some of the most stylish gathering spaces in the city, many of which are graced with selections from the hotel's world-class art collection.

The Peninsula Yun

Iconic • Breathtaking

Beijing's most glamorous rooftop lounge offers stunning city views along with chic cocktails, vibrant live music, and contemporary Mediterranean cuisine. Its sweeping, lantern-lit terrace provides a supremely alluring backdrop for evening receptions and VIP parties for up to 150 guests.

The Peninsula Suite

Intimate • Elegant

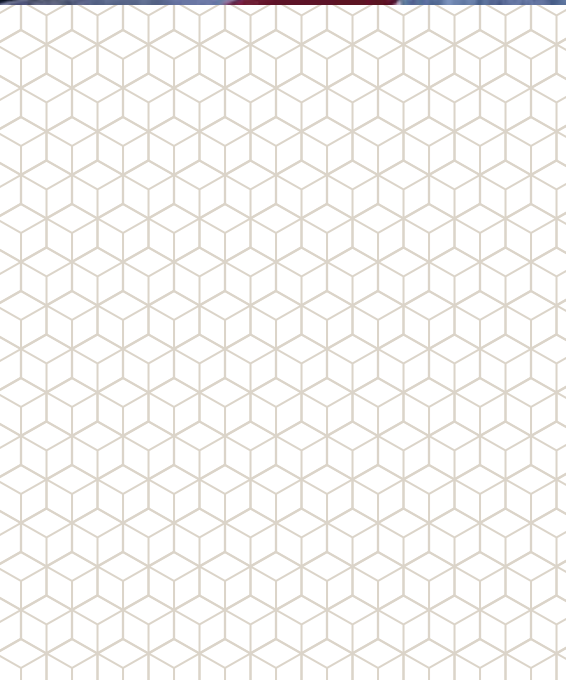
The sumptuous Peninsula Suite showcases both sleek modern elegance and traditional Beijing culture. The grand 660-square-

metre (7,104-square-foot) suite includes a large dining room, which can accommodate up to 18 diners for a curated private banquet, and also a graceful living room adorned with precious Chinese antiques and artworks, a sophisticated setting where guests can enjoy pre and post-dinner drinks.

The Peninsula Gallery

Unique • Exclusive

The Peninsula Beijing's private art gallery hosts exhibits by an array of preeminent contemporary artists, as well as works created by the hotel's Artist in Residence programme that provides local artists with accommodation and gallery space to support their artistic creation. These works provide a stylish backdrop for exclusive receptions and special events, and allow guests to learn about the fascinating world of Chinese modern art.



The Peninsula Gallery

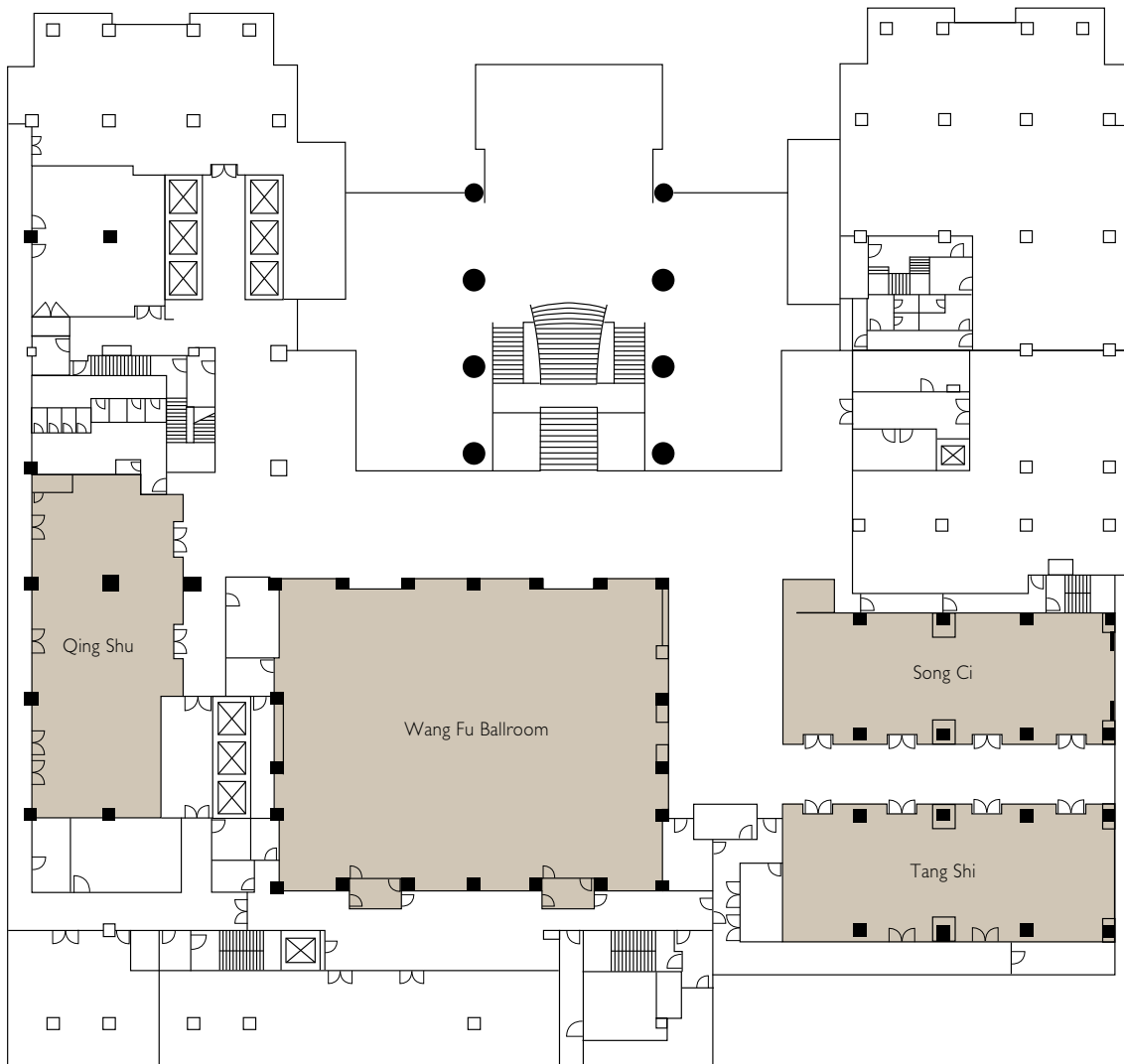
CAPACITY CHART

Venue / Location	Area		Capacity					
	Sq M	Sq Ft	Banquet	Cocktail	Theatre	Boardroom	Classroom	U-Shape
2nd Floor								
Wang Fu Ballroom	565	6082	300	600	450	130	300	150
Tang Shi	199	2142	100	120	100	50	70	60
Song Ci	199	2142	100	120	100	50	70	60
Qing Shu	155	1668	60	80	80	N/A	50	N/A
3rd Floor								
The Peninsula Gallery	233	2508	N/A	120	N/A	N/A	N/A	N/A
15th Floor								
The Peninsula Yun	330	3552	N/A	150	N/A	N/A	N/A	N/A



FLOOR PLANS

SECOND FLOOR





Hutong Tour – A Walk Through Beijing's Past

UNIQUE LOCAL EXPERIENCES: DISCOVER THE VIBRANT CULTURE OF BEIJING

The Peninsula Beijing welcomes the opportunity to introduce event and meeting guests to the highlights and hidden gems of its home city. These can be experienced with an array of bespoke excursions and tours.

THE PENINSULA ACADEMY

Through a series of workshops, private tours, and programmes, The Peninsula Academy invites guests to explore distinctive aspects of the city's art, gastronomy, and modern lifestyle. These programmes include a helicopter sightseeing tour over

The Great Wall, a rickshaw ride through the ancient Hutongs, and a private tour to artists' studios.

- *A Window on Chinese Contemporary Art*
China has been at the forefront of the contemporary art world in recent years and Beijing is at the epicentre of this creative output. This exclusive tour will appeal to art lovers or those simply curious to learn more about the burgeoning art scene in Beijing. A private viewing of original artworks and studio collections can be arranged.
- *Great Wall Adventure – Vistas Through Time*
Guests will learn stories and historical facts as they climb the

restored section of the wall and experience breathtaking vistas of this stunning landscape. Guests can also enjoy a sumptuous The Peninsula brunch with spectacular views of the Great Wall on a private pavilion.

- *Hutong Tour – A Walk Through Beijing's Past*
A private tour of the Hutongs provides guests with rare insights into traditional Chinese life and architecture as they explore the labyrinthine lanes by rickshaw. After the tour, guests will be escorted to a secluded teahouse overlooking the scenic Houhai Lake, where a signature Peninsula Afternoon Tea will be served.

Please contact the MICE Specialist, Ella Xin at ellaxin@peninsula.com for more information.

8 Goldfish Lane, Wangfujing, Beijing 100006, The People's Republic of China
T: +86 10 8516 2888 F: +86 10 6510 6311 pbj@peninsula.com peninsula.com

HONG KONG • SHANGHAI • BEIJING • TOKYO • NEW YORK • CHICAGO • BEVERLY HILLS • PARIS • BANGKOK • MANILA
Under Development LONDON • ISTANBUL • YANGON